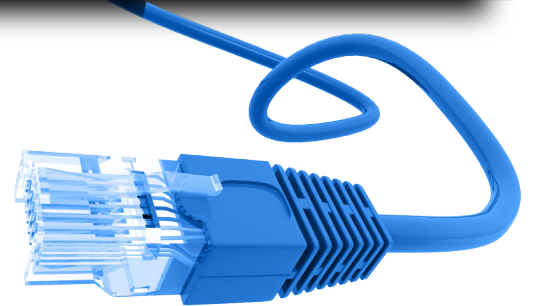


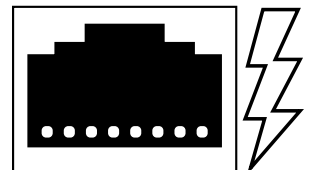
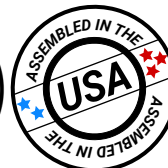
# EM27-AS



## PoE Monitor

w/ Android SoC

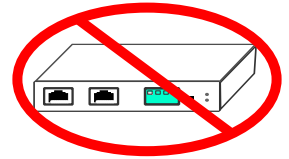
GPO Display's Power Over Ethernet (PoE) Monitors are designed to deliver critical, detailed information in versatile environments where traditional power solutions are impractical. Additionally, the secure line option ensures enhanced security for sensitive information, while the Android SoC option provides robust, built-in processing power for seamless performance.



# Highlights

EM27-AS

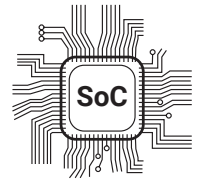
No need for a separate PoE splitter.



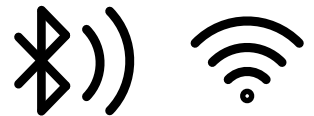
No AC outlet required.



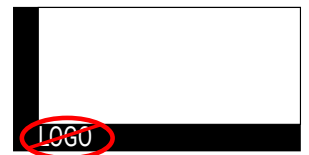
Built-in Android SoC



Wi-Fi & Bluetooth Connectivity



Sleek, unbranded/customizable, black powder-coated metal housing.



# Specifications

## Panel Attributes

|                       |  |
|-----------------------|--|
| Panel Technology      | Commercial-grade IPS LED-LCD                       |
| Surface Treatment     | Hard Coating (3H), anti-glare treatment (Haze 25%) |
| Screen Size (diag.)   | 27"  |
| Native Resolution     | 1920 x 1080  |
| Active Area (mm)      | 597.888 (H) x 336.312 (V)                          |
| Brightness (typ.)     | 300nit   |
| Contrast Ratio (typ.) | 1,000:1  |
| Displayable Colors    | 16.7M  |
| Viewing Angle         | 178°/ 178°   |
| Aspect Ratio          | 16:9   |

## Dimensions, Power & Other

|   |                                      |
|---|--------------------------------------|
| Display Dimensions (W x H x D) + Weight | 24.23 x 14.17 x 1.83 (in), 14.55 lbs |
| Packed Dimensions (W x H x D) + Weight  | 30.12 x 20.08 x 7.87 (in), 21.61 lbs |
| Display Orientation                     | Landscape or Portrait                |
| Mounting Pattern (mm)                   | 200 x 100, M6                        |
| Electrical Ratings                      | AC 100 - 240V (50/60Hz)              |
| Power Consumption (max.)                | 28.5W                                |
| Heat Output (BTU/hr)                    | 97.2                                 |
| Operating Temperature                   | 32 ~ 104°F                           |
| Operating Humidity Range                | -4 ~ 140°F                           |
| Industrial Reliability                  | 30,000hrs+                           |
| Usage Ratings (hrs/days)                | 16/7                                 |
| Warranty                                | Two Years (parts & labor)            |

**\*\*Consult with GPO Display regarding best practices for preventing image retention and for prolonging display lifetime.**

# Specifications, Cont.

|                       |  |
|-----------------------|--|
| PoE Input Port        | 1 10/100/1000 BASE-T RJ45  |
| TF (Trans Flash) Card | 1 x Input  |
| USB                   | 2 x Input  |
| DC 24V                | 1 x *Output when PoE in use, input option when PoE not in use (w/AC-24VDC adapter)   |
| HDMI                  | 1 x Output   |
| Power S/W             | 1 (w/ LED indicator)   |
| Power Requirements    | 4-pair 802.3bt PoE++ PoE DC 48 ~ 56V   |
| Run Distance          | 802.3 bt PoE++ input<br>(60W+) 4-pair UTP Cat. 5e, 6, up to 100m (328ft)   |
| PoE Standard          | 802.3 bt PoE++   |
| Data Rate             | 10/100/1000Mbps  |
| ESD Protection        | 2KV  |
| EFT Protection        | 2KV  |
| Standards Compliance  | IEEE 802.3 10BASE-T Ethernet<br>IEEE 802.3u 100BASE-TX Fast Ethernet<br>IEEE 802.3ab 1000BASE-T Gigabit Ethernet<br>IEEE 802.3bt 4-pair Power over Ethernet Type 4 |

**\*Notes:** Power availability depends upon Power Source Equipment (PSE). Actual Amperage requirements of input device are often different from those listed on device's AC-DC adapter. The above figures assume power for a single external device.

## POE LED Status Indicators:

Blue = Active

Blinking Blue = Not Active

# Specifications, Cont.

## SoC Specification

|                  |            |
|------------------|------------|
| Operating System | Android 12 |
| Memory           | 4GB        |
| Storage          | 64GB       |
| WiFi             | 2.4G       |
| Bluetooth        | BT5.2      |

### Accessories:

- HDMI cable x1
- RS-232 cable x1
- Remote controller x1
- AAA batteries x2
- 1m Ethernet Cable

### Options:

- Custom housing
- Custom colors
- Custom logos
- Other designs
- Tempered protective glass

# ***Drawings***

## ***Display Only***

TBD

## ***Display, Wall Mount & Side Cover***

TBD



Product specification and design are subject to change without notice.

© Copyright 2024, GPO Display All rights reserved. This document may not be copied in any form without written permission from GPO Display