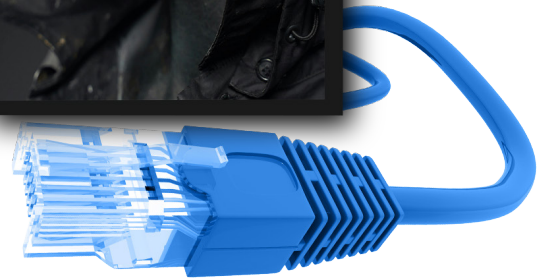


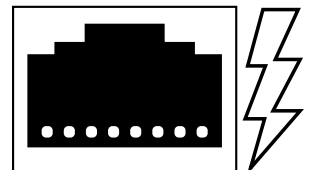
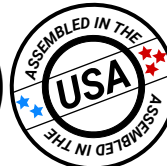
ET43-AS



PoE Touch

w/ Android SoC

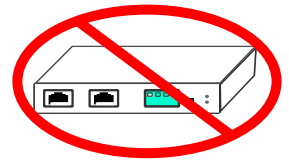
GPO Display's Commercial LCDs have long brought critical, detailed information to areas where standard 16:9 screens don't fit. However, there are rarely AC outlets above or alongside doorways. Power Over Ethernet stretch displays solve this issue via structured cabling instead of costly & inconvenient new AC outlet(s).



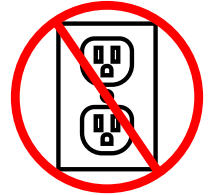
Highlights

ET43-AS

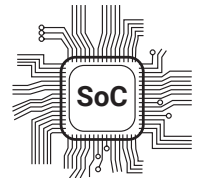
No need for a separate PoE splitter.



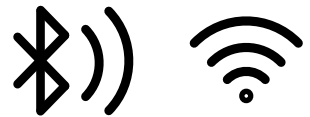
No AC outlet required.



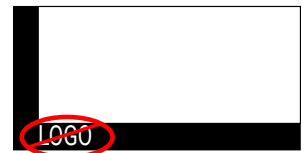
Built-in Android SoC



Wi-Fi & Bluetooth Connectivity



Sleek, unbranded/customizable, black powder-coated metal housing.



24/7-rated.



10pt projected capacitive (PCAP) touch.



Specifications

Panel Attributes

Panel Technology	Commercial-grade IPS LED-LCD
Surface Treatment	Hard Coating (3H), anti-glare treatment (Haze 25%)
Screen Size (diag.)	42.5"
Native Resolution	1920 x 1080
Active Area (mm)	940.9 (H) x 529.25 (V)
Brightness (typ.)	500nit
Contrast Ratio (typ.)	4,000:1
Displayable Colors	16.7M
Viewing Angle	178°/ 178°
Aspect Ratio	16:9

Dimensions, Power & Other

Display Dimensions (W x H x D) + Weight	38.86 x 22.62 x 1.93 (in), 36.38 lbs
Packed Dimensions (W x H x D) + Weight	44.76 x 25.54 x 8.66 (in), 49.6 lbs
Display Orientation	Landscape or Portrait
Mounting Pattern (mm)	300 x 200, M8
Electrical Ratings	AC 100 - 240V (50/60Hz)
Power Consumption (max.)	67W
Heat Output (BTU/hr)	228.6
Operating Temperature	32 ~ 104°F
Operating Humidity Range	-4 ~ 140°F
Industrial Reliability	50,000hrs+
Usage Ratings (hrs/days)	24/7
Warranty	One Year (parts & labor)

****Consult with GPO Display regarding best practices for preventing image retention and for prolonging display lifetime.**

Specifications, Cont.

PoE Input Port	1 10/100/1000 BASE-T RJ45
TF (Trans Flash) Card	1 x Input
USB	2 x Input
DC 24V	1 x *Output when PoE in use, input option when PoE not in use (w/AC-24VDC adapter)
HDMI	1 x Output
Power S/W	1 (w/ LED indicator)
Power Requirements	4-pair 802.3bt PoE++ PoE DC 48 ~ 56V
Run Distance	802.3 bt PoE++ input (60W+) 4-pair UTP Cat. 5e, 6, up to 100m (328ft)
PoE Standard	802.3 bt PoE++
Data Rate	10/100/1000Mbps
ESD Protection	2KV
EFT Protection	2KV
Standards Compliance	IEEE 802.3 10BASE-T Ethernet IEEE 802.3u 100BASE-TX Fast Ethernet IEEE 802.3ab 1000BASE-T Gigabit Ethernet IEEE 802.3bt 4-pair Power over Ethernet Type 4

***Notes:** Power availability depends upon Power Source Equipment (PSE). Actual Amperage requirements of input device are often different from those listed on device's AC-DC adapter. The above figures assume power for a single external device.

POE LED Status Indicators:

Blue = Active

Blinking Blue = Not Active

Specifications, Cont.

Touch Specification

Technology	Projected Capacitive Touch
Glass	3mm Tempered Glass
Simultaneous Touch Points	Single-touch, Dual Touch, and 10pt
Touch Accuracy	1mm
Response Time	25ms
Interface	USB 1.1 Full-Speed
Detection Method	Finger

SoC Specification

Operating System	Android 12
Memory	4GB
Storage	64GB
WiFi	2.4G
Bluetooth	BT5.2

Accessories:

- HDMI cable x1
- RS-232 cable x1
- Remote controller x1
- AAA batteries x2
- 1m Ethernet Cable

Options:

- Custom housing
- Custom colors
- Custom logos
- Other designs
- Tempered protective glass

Drawings

ET43-AS

Display Only

TBD

Display, Wall Mount & Side Cover

TBD



Product specification and design are subject to change without notice.

© Copyright 2024, GPO Display All rights reserved. This document may not be copied in any form without written permission from GPO Display