

PA12H



Panoramic LCD



Stretch Your Imagination

Featuring a distinctive, "stretched" aspect ratio, these displays fit in spaces which traditional 16:9 displays will not.

Menu boards, ad space and lobby signage all benefit from the eye-catching design.



Highlights

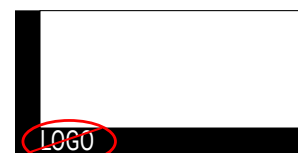
Includes wall mount and trim (Top, Left, Right, Bottom).



Unique stretched aspect ratio.



Sleek, unbranded, black powder-coated metal housing.



“Secure-Ready” = No NFC, RF, WiFi, or embedded computing.



Specifications

Panel Attributes

Panel Technology	12" Stretched LED-LCD
Surface Treatment	Hard Coating (25% Haze 3H), anti-glare treatment
Screen Size (diag.)	12.3" (1/3 cut of 15")
Native Resolution	1024 x 256
Active Area (mm)	304.1 x 76
Brightness (typ.)	300nit
Contrast Ratio (typ.)	700:1
Displayable Colors	16.7M (8-bit)
Viewing Angle	170° / 170°
Aspect Ratio	4:1
Refresh Rate	60Hz

Specifications

Dimensions, Power & Other

Display Dimensions (W x H x D)	13.58 x 4.72 x 1.69 (In)
Packed Dimensions (W x H x D) + Weight	28 x 14 x 11 (in) - 18lbs
Display Orientation	Landscape or Portrait
Mounting Pattern (mm)	75 x 75
Electrical Ratings/ Power Type	AC 100 -240V (50/60Hz)/ Power Adapter 12V
Power Consumption (typ.)	7W
Standby Power Consumption	<1W
Heat Output (BTU/hr)	34
Operating Temperature	32°F -104°F
Operating Humidity Range	20~80%
Industrial Reliability	30,000 + hours
Usage Ratings (hrs/days)	24/7**
Warranty	Three year advance replacement (Cover 3/ Quick 3)

****Consult with GPO Display regarding best practices for preventing image retention and for prolonging display lifetime.**

Connectivity

DVI	1
HDMI	1
VGA	1
RS-232	1
DC Input	1

Accessories:

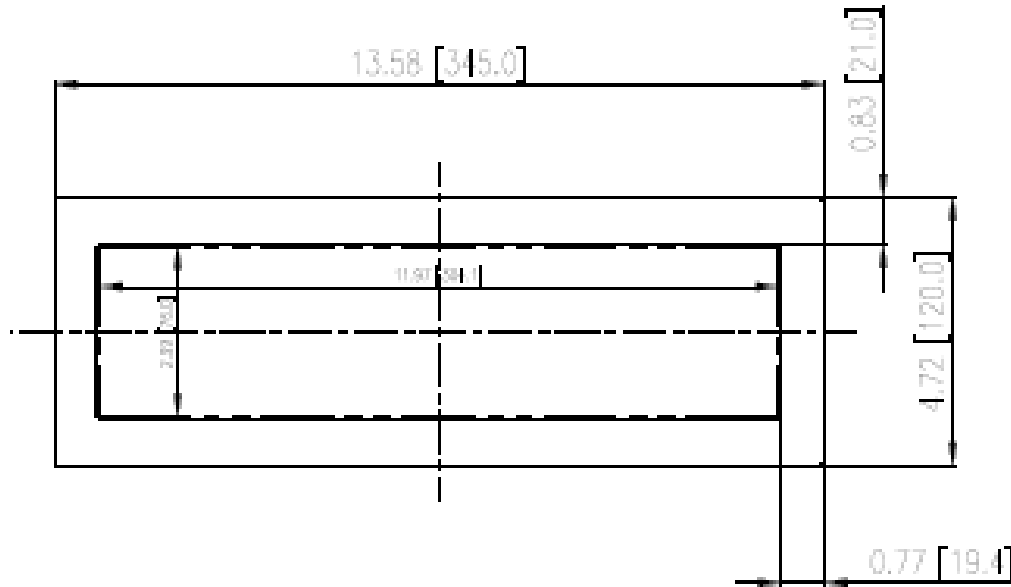
HDMI cable x1, RS-232 cable x1, Remote controller x1, AAA batteries x2, Power adapter x1, Power cord x1, Power adapter “brick” mounting bracket x1

Options:

- Custom housing with custom colors, logos, and other designs.
- Tempered protective glass.

Drawings

Front View



Rear, Side, and Top Views

