

# USP265M & USP490M





## User Manual

### Ultra Slim Profile Displays

USP (Ultra-Slim Profile) displays feature a mounted depth of under 1". This sleek design, combined with their light weight and commercial reliability, makes USP displays ideal for a wide range of signage applications. Custom framing options are available to ensure that your digital signage is both eye-catching and in keeping with the theme of your space. Available in both 26.5" square and 49" Full-HD (16:9 aspect ratio), USP displays represent the cutting edge in digital signage displays.

# Important Safety Instructions

1.  To reduce the risk of fire or electric shock, do not expose this appliance to rain or other forms of moisture.
2.  Indoor Use Only
3. Display must not be exposed to liquids via dripping or splashing. Please do not place liquid –filled items such as vases near the display.
4. Use only a properly grounded plug and receptacle.
5. CAUTION – These instructions are for use by qualified service personnel only. To reduce the risk of electric shock, do not perform any service other than that contained in the operating instructions unless you are qualified to do so.
6. Do not use a damaged or loose plug.
7. This may cause electrical shock or fire.
8. Operate the display only from a power source (i.e. voltage) indicated in the product specification.
9. Otherwise the product can be damaged, fire can occur or you may be electrocuted. If you are not sure what type of power supply you have, consult a certified electrician.
10. In the presence of thunder and lightning, never touch the power cord and signal cable because it can be very dangerous.
  - ▶ It can cause electric shock.
11. Do not connect several extension cords, electrical appliances or electrical heaters to a single outlet. Use a power strip with a grounding terminal designed for exclusive use with the computer.
  - ▶ A fire can break out due to overheating.
12. Do not touch the power plug with wet hands. Additionally, if the cord pin is wet or covered with dust, dry the power plug completely or wipe dust off before plugging in the cord.
  - ▶ You may be electrocuted due to excess moisture.
13. Insert the power plug firmly so it cannot come loose.
  - ▶ A loose connection can cause fire.
14. When disconnecting the display from an electrical outlet, the plug must be pulled out from the socket. Do not remove power cord from outlet by pulling from the cord. Pull from the plug head.
15. Hold the plug when pulling out the power cable. Do not pull the plug out by the wire. Do not bend the power cord with excessive force or put heavy objects on the power cord.
  - ▶ The power line can be damaged, which may cause electric shock or fire.
16. Do not insert metal or other conductive materials into the product openings. Additionally, do not touch the power cable right after plugging into the wall input terminal.
  - ▶ You may be electrocuted.
17. The appliance coupler is used as the disconnect device.
18. Please make sure the device is installed near the wall outlet to which it is connected and that the outlet is easily accessible.
19. Do not unplug the power cord while the product is in use.
  - ▶ Electrical shock can damage the product.
20. As long as this unit is connected to the AC wall outlet, it is not disconnected from the AC power source even if the unit is turned off.
21. Do not remove ground prong from three-pronged plugs. If your outlet will not accept three-pronged plugs, consult an electrician for replacement.
22. Do not block any ventilation openings. Install in accordance with the manufacturer’s instructions
23. This is a Class A digital device

**CAUTION**  
**RISK OF ELECTRIC SHOCK**  
**DO NOT OPEN**



CAUTION : TO REDUCE THE RISK OF ELECTRIC SHOCK, DO NOT REMOVE COVER (OR BACK). NO USER-SERVICEABLE PARTS INSIDE. REFER SERVICING TO QUALIFIED SERVICE PERSONNEL.

## Thank You for Purchasing a USP265M display

This manual describes how to use the product and provides safety guidelines and best practices. Please read the manual carefully before installing or using the product. After reading this manual, please retain for future reference. If you have any questions or a problem occurs, please contact either the company you purchased this product from or an authorized service center.

- ✓ Displaying static images for an extended period of time may cause a “burn-in” effect.
- ✓ “Burn-in” effect and the faults in brightness and picture elements caused by extended display of static images are not subject to warranty coverage.

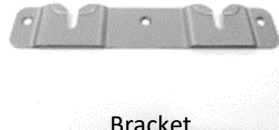
## Accessories



Power Adapter



Power Adapter



Bracket



Bracket Screws & Anchors

## Display Components

I/O Port

Sound Out

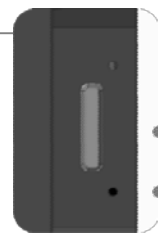
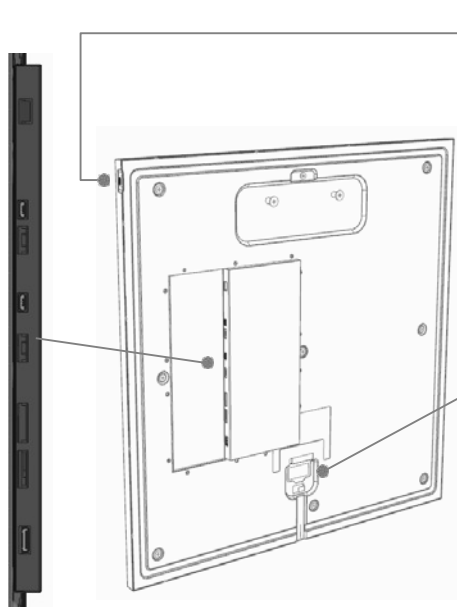
RS-232

Micro  
USB

LAN

SD Slot

Mini HDMI



On/Off switch

- Short click (within 1 second)  
- Sleep mode
- Long click : Power On/Off

Reset switch

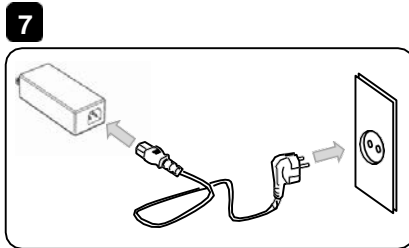
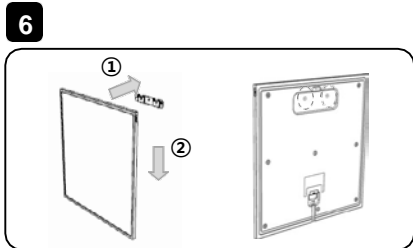
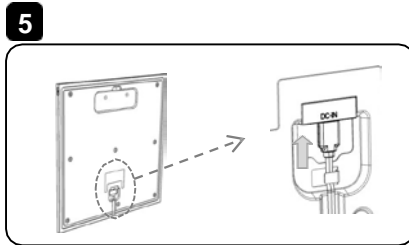
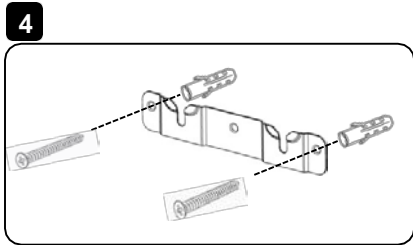
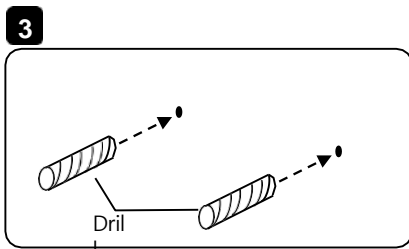
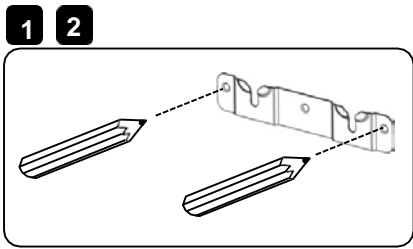


SVC1 Port

SVC2 Port

DC Power Input

\* The SVC port is for factory calibration only.



\* If the mounting wall is not concrete, no drilling is required.

## 1 Check your installation space

Remove any foreign substance or protrusions on the wall where the product will be installed.

## 2

## Screw position mark

Place the bracket at the location where the product will be installed and mark it in both holes.

## 3

## 4 Perforation

Drill the part marked on number 2

## 4

## 5 Bracket installation

Insert the screw anchor into hole and fix the bracket with a screw.

## 5

## 6 Power adapter connect

Connect the output terminal of the adapter to the DC power input on the back of the product.

## 7

## Product installation

Hang the product on the bracket.

## Power connect

Connect the power cable to the adapter and connect the power.

## Thank You for Purchasing a USP490M display

This manual describes how to use the product and provides safety guidelines and best practices. Please read the manual carefully before installing or using the product. After reading this manual, please retain for future reference. If you have any questions or a problem occurs, please contact either the company you purchased this product from or an authorized service center.

- ✓ Displaying static images for an extended period of time may cause a “burn-in” effect.
- ✓ “Burn-in” effect and the faults in brightness and picture elements caused by extended display of static images are not subject to warranty coverage.

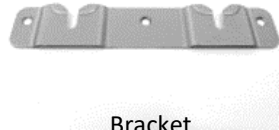
## Accessories



Power Adapter



Power Adapter



Bracket



Bracket Screws & Anchors

## Display Components

### I/O Port

DC Power Input

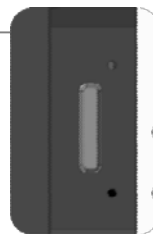
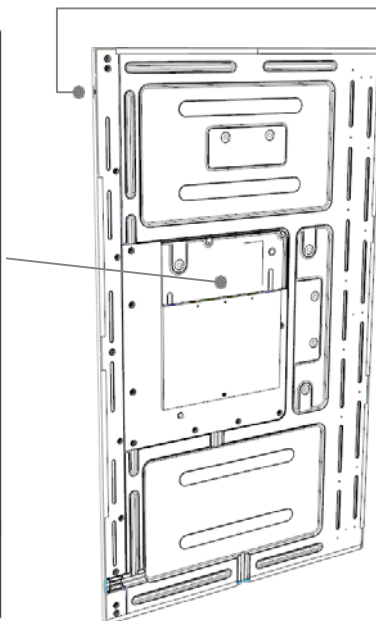
RS-232

Micr  
o  
USB

LAN

SD Slot

Mini  
HDMI



On/Off switch

- Short click (within 1 second)  
- Sleep mode
- Long click : Power On/Off

Reset switch



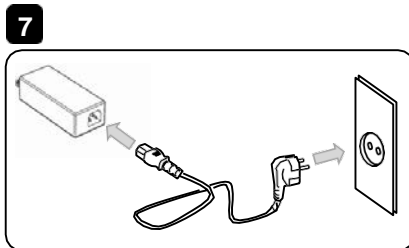
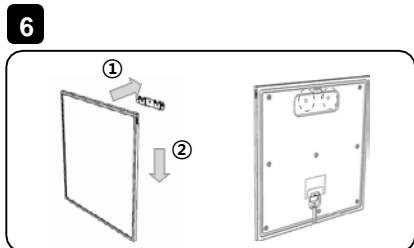
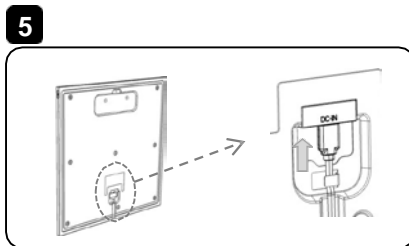
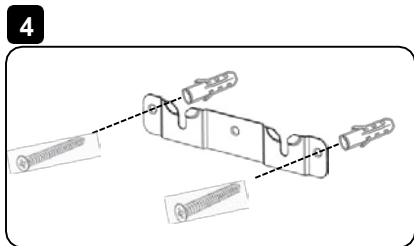
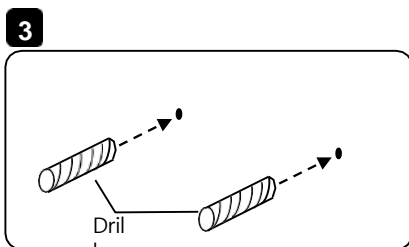
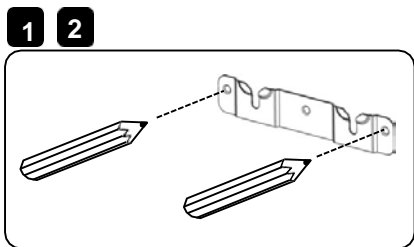
SVC1  
Port

SVC2 Port

DC Power Input

\* The SVC port is for factory calibration only.

Sound Out



\* If the mounting wall is not concrete, no drilling is required.

## 1 Check your installation space

Remove any foreign substance or protrusions on the wall where the product will be installed.

## 2

## Screw position mark

Place the bracket at the location where the product will be installed and mark it in both holes.

## 3

## 4 Perforation

Drill the part marked on number **2**

## 4

## 5 Bracket installation

Insert the screw anchor into hole and fix the bracket with a screw.

## 5

## 6 Power adapter connect

Connect the output terminal of the adapter to the DC power input on the back of the product.

## 7

## Product installation

Hang the product on the bracket.

## Power connect

Connect the power cable to the adapter and connect the power.

# Serial Control Protocol

## Serial Setup

Item	Settings
Baud rate	9600bps
Data Bit	8bit
Stop Bit	1bit
Parity Bit	None
Stream Control	None

## Command List

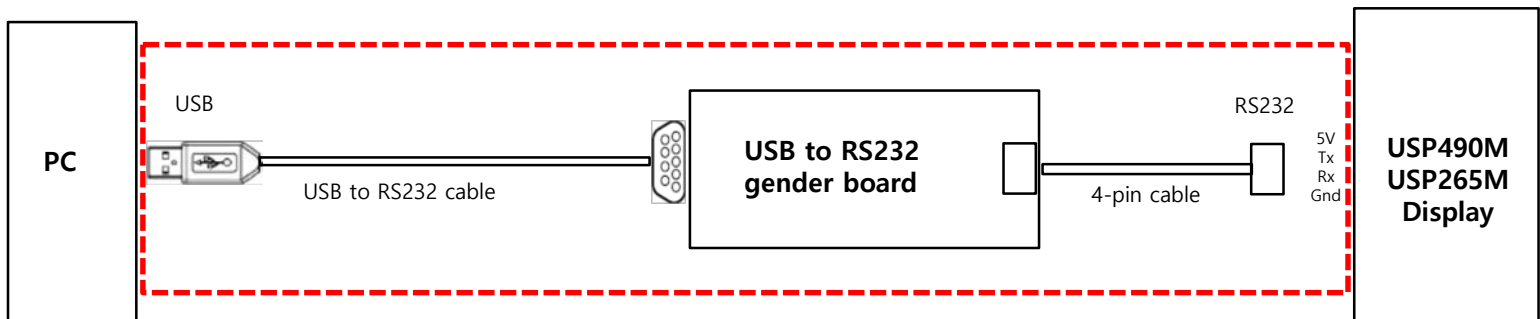
Power ON (Back Light On)									
73	65	74	62	6C	6F	6E	20	31	0D
Hex									

Power OFF* (Back Light Off)									
73	65	74	62	6C	6F	6E	20	30	0D
Hex									

\*Do not use the power button on the side of the display

Input Source Toggle* (Android Board – HDMI Mode) Loop									
73	65	74	73	6F	75	72	63	65	0D
Hex									

\*When no active HDMI input is detected, the display will revert to the Android board as a source



## RS232 Command Position (4-Pin)

