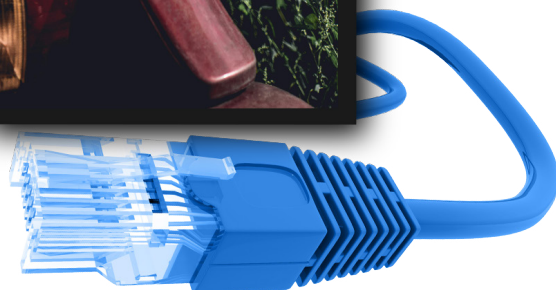


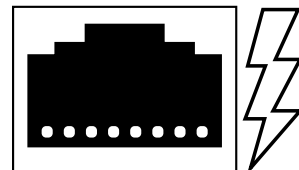
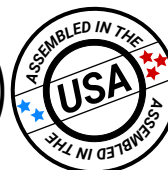
ET32SL



PoE Touch

Secure Line

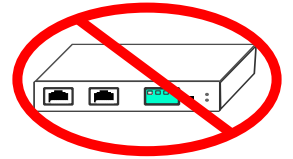
GPO Display's Power Over Ethernet (PoE) Touch Screens are designed to deliver critical, detailed information in versatile environments where traditional power solutions are impractical. Additionally, the secure line option ensures enhanced security for sensitive information, while the Android SoC option provides robust, built-in processing power for seamless performance.



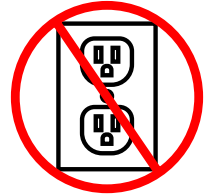
Highlights

ET32SL

No need for a separate POE splitter.



No AC outlet required.



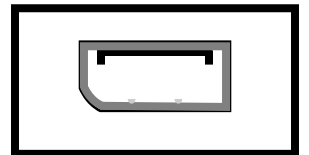
12/24VDC Outlet for third-party devices such as media players.

12V	+
V-	-
24V	+

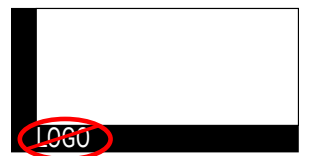
“Secure-Ready” = No NFC, RF, WiFi, or embedded computing.



DisplayPort output for duplicating images.



Sleek, unbranded/customizable, black powder-coated metal housing.



24/7-rated.



10pt projected capacitive (PCAP) touch.



Specifications

Panel Attributes

Panel Technology	Commercial-grade LED-LCD
Surface Treatment	Hard Coating (3H), anti-glare treatment (Haze 2%)
Screen Size (diag.)	31.5"
Native Resolution	1920 x 1080
Active Area (mm)	698.4 (H) x 392.85 (V)
Brightness (typ.)	500nit
Contrast Ratio (typ.)	4,000:1
Displayable Colors	16.7M
Viewing Angle	178°/ 178°
Aspect Ratio	16:9

Dimensions, Power & Other

Display Dimensions (W x H x D) + Weight	28.83 x 16.5 x 1.92 (in), 20.94 lbs
Packed Dimensions (W x H x D) + Weight	34.45 x 22.44 x 8.66 (in), 27.56 lbs
Display Orientation	Landscape or Portrait
Mounting Pattern (mm)	200 x 100, M6
Built in Speaker	Yes
Electrical Ratings	AC 100 - 240V (50/60Hz)
Power Consumption (max.)	41W
Heat Output (BTU/hr)	174.0
Operating Temperature	32 ~ 104°F
Operating Humidity Range	-4 ~ 140°F
Industrial Reliability	50,000hrs+
Usage Ratings (hrs/days)	24/7
Warranty	Two Years (parts & labor)

****Consult with GPO Display regarding best practices for preventing image retention and for prolonging display lifetime.**

Specifications, Cont.

Connectivity & PoE Info

HDMI	1 x Input
RS-232	1 x Input: 3-pin terminal block (3.5mm pitch)
DisplayPort	1 x Input, 1 x Output
RJ45	1 x PoE Input, 1 x Data Output, 1 x LAN
DC Plug Connector	2 x Input/Output, 1 x Output: 3-pin terminal block (5.08mm pitch)
Power Requirements	4-pair IEEE 802.3bt Type 3 or Type 4 PoE++ (60W+)
Standards Compliance	IEEE 802.3 10BASE-T Ethernet IEEE 802.3u 100BASE-TX Fast Ethernet IEEE 802.3ab 1000BASE-T Gigabit Ethernet IEEE 802.3bt 4-pair Power over Ethernet Type 4

***Notes:** Power availability depends upon Power Source Equipment (PSE). Actual Amperage requirements of input device are often different from those listed on device's AC-DC adapter. The above figures assume power for a single external device.

POE LED Status Indicators:

Blue = Active

Blinking Blue = Not Active

Touch Specification

Technology	Projected Capacitive Touch (PCAP)
Multi Touch Point	10 Point
Response Time	≤ 25ms
Accuracy	2mm
Surface Hardness	6H
Glass	3.0mm Tempered Glass
Touch Method	Finger / Glove / Passive Stylus
Interface	USB
Supported OS	Windows / Android / Mac* / Linux

*Mac OS supports single-touch operation via USB HID.

Specifications, Cont.

Accessories:

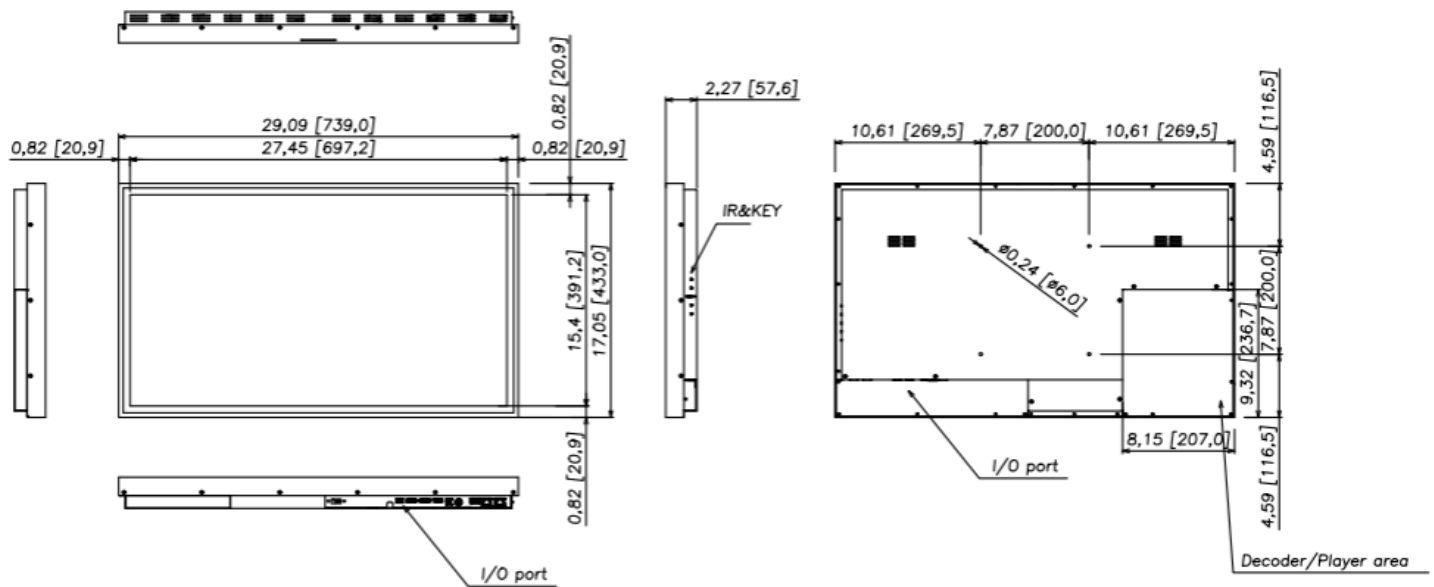
- (1) Slim mount
- (1) HDMI cable
- (1) DC power cable
- (1) Remote controller
- (2) AAA batteries
- (1) 1m Ethernet cable

Options:

- Custom housing
- Custom colors
- Custom logos
- Other designs
- Tempered protective glass

Drawings

Display Only



Display, Wall Mount & Side Cover

