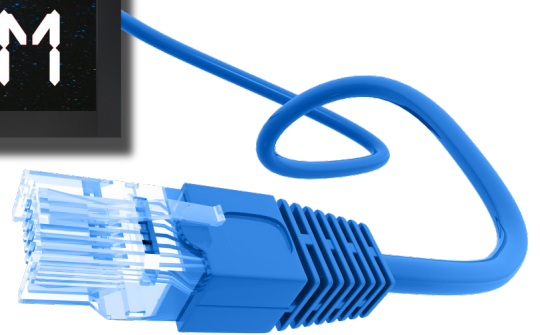


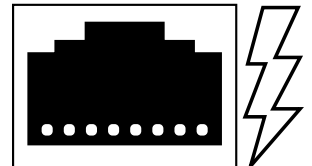
POE57D



Panoramic LCD

Power Over Ethernet Display

GPO Display's Panoramic LCDs have long brought critical, detailed information to areas where standard 16:9 screens don't fit. However, there are rarely AC outlets above or alongside doorways. Power Over Ethernet stretch displays solve this issue via structured cabling instead of costly & inconvenient new AC outlet(s).



Highlights

POE57D

No need for a separate POE splitter.



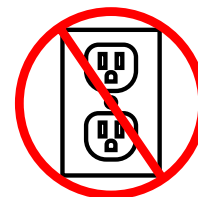
Includes wall mount and trim (Top, Left, Right, Bottom).



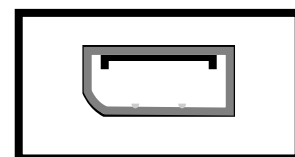
Ability to toggle the display area using a hotkey on remote.



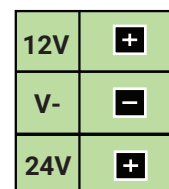
No AC outlet required.



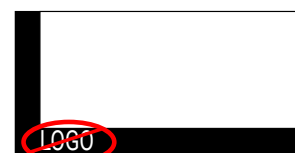
DisplayPort output for duplicating images.



12/24VDC Outlet for third-party devices such as media players.



Sleek, unbranded, black powder-coated metal housing.



“Secure-Ready” = No NFC, RF, WiFi, or embedded computing.



24/7-rated.



Specifications

Panel Attributes

Panel Technology	57" Stretched LED-LCD
Surface Treatment	Hard Coating (3H), anti-glare treatment (Haze 28%)
Screen Size (diag.)	56.6"
Native Resolution	3840 x 430
Active Area (mm)	1428.5 x 160
Brightness (typ.)	600nit
Contrast Ratio (typ.)	4000:1
Displayable Colors	1.07B
Viewing Angle	178°/ 178°
Aspect Ratio	80:9
Refresh Rate	60Hz

Dimensions, Power & Other

Display Dimensions (W x H x D) + Weight	57.25 x 7.31 x 2.41 (in) - 29lbs
Packed Dimensions (W x H x D) + Weight	64 x 13 x 9 (in) - 43lbs
Display Orientation	Landscape or Portrait
Mounting Pattern (mm)	200 x 100
Electrical Ratings	AC 100 -240V (50/60Hz)
Power Consumption (max.)	55W
Standby Power Consumption	<1W
Heat Output (BTU/hr)	178
Operating Temperature	32°F -104°F
Operating Humidity Range	20~80%
Industrial Reliability	50,000+ hours
Usage Ratings (hrs/days)	24/7**
Warranty	Two year advance replacement (Cover 2/ Quick 2)

****Consult with GPO Display regarding best practices for preventing image retention and for prolonging display lifetime.**

Specifications, Cont.

HDMI	1 x Input
DisplayPort	1 x Input, 1 x Output (video daisy-chain)
RS-232	1 x Input (3-pin terminal block)
POE Input Port	1 10/100/1000 BASE-T RJ45
Data Output Port	1 10/100/1000 BASE-T RJ45
DC Out Plug Connector	1 removable 3-pin terminal block (5.08mm pitch)
Power Requirements	4-pair IEEE 802.3bt Type 4 PoE++ (90W+)
Power Output*	w/ 802.3 bt type 4 PoE++ input: 12V DC: 14.4W, 1.2A (max.) 24V DC: 14.4W, 0.6A (max.)
Standards Compliance	IEEE 802.3 10BASE-T Ethernet IEEE 802.3u 100BASE-TX Fast Ethernet IEEE 802.3ab 1000BASE-T Gigabit Ethernet IEEE 802.3bt 4-pair Power over Ethernet Type 4

*Notes: Power availability depends on the connected Power Source Equipment (PSE). Actual current draw of the connected device may differ from the rating printed on its AC-DC power adapter. The above figures assume power delivery to a single external device.

Display LED Status Indicators:

Green = Power On / Signal Detected

Red = Power Off

Amber = Standby / No Signal

PoE LED Status Indicators:

Blue = Active

Blinking Blue = Not Active

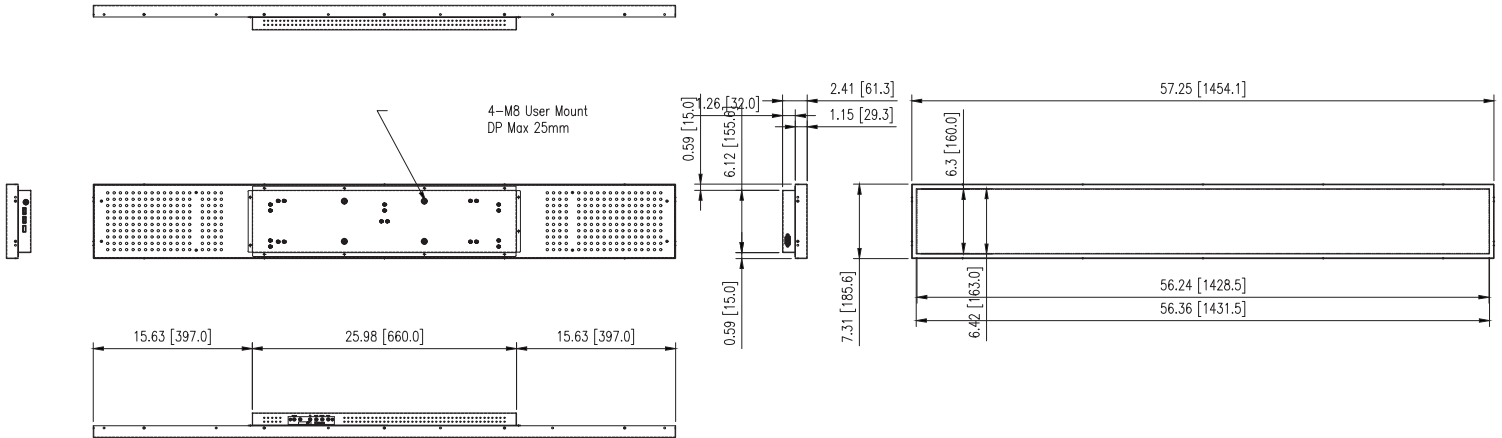
Accessories:

- (1) Wall Mount
- (1) HDMI cable
- (1) DC Power cable
- (1) Remote controller
- (2) AAA batteries
- (1) 1m Ethernet cable

Options:

- Custom housing
- Custom colors
- Custom logos
- Other designs
- Tempered protective glass

Display Only



Display, Wall Mount & Side Cover

